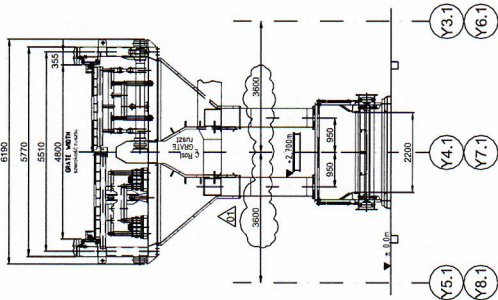
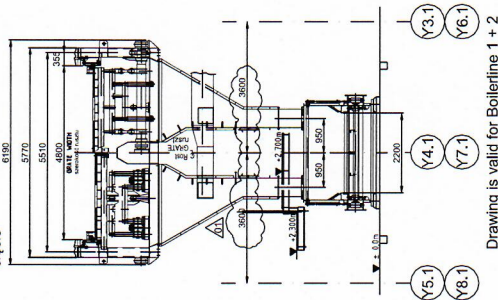


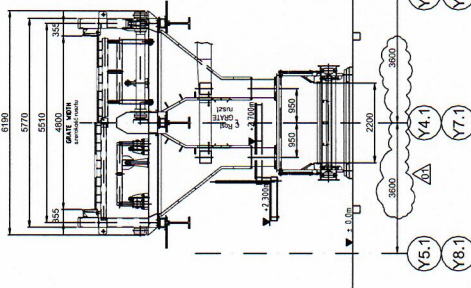
SECTION E-E ciężkie



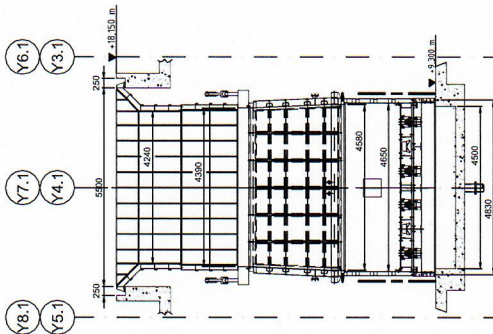
SECTION D-D ciężkie



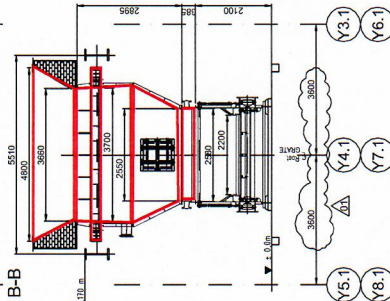
SECTION C-C ciężkie



SECTION A-A ciężkie



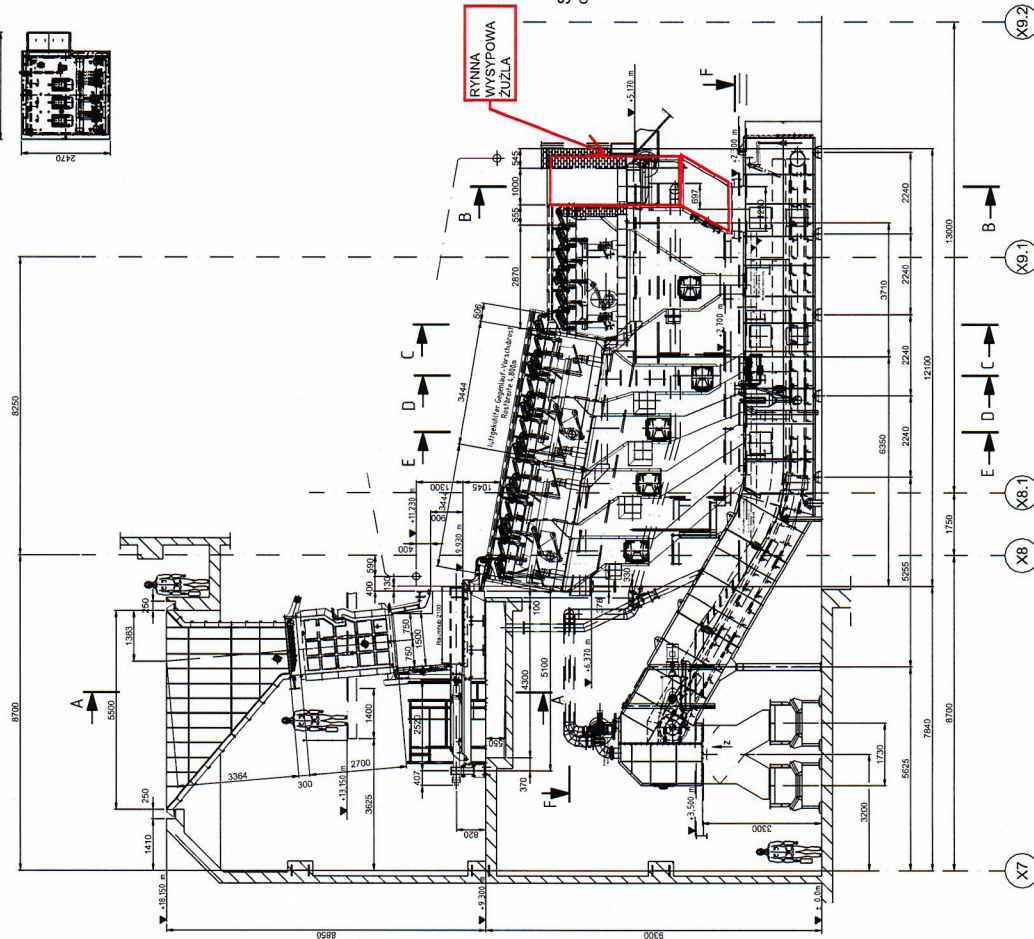
SECTION B-B ciężkie



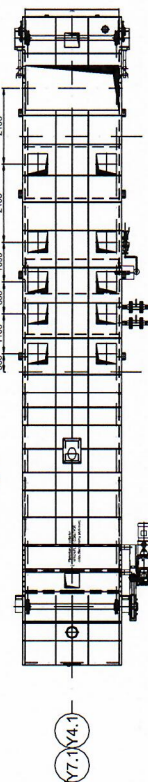
Coil hydraulic power
urządzenie hydrauliczne
Weight ca. 33.5 kg
ciężar ca. 75 kg

Hydraulic
urządzenie hydrauliczne
Weight ca. 480 kg (incl. 0.1 filling)
ciężar ca. 1050 kg (z 0.1 napełnieniem)

RYNNA
WYSPAWA
ZUZŁA



SECTION F-F ciężkie



Drawing is valid for Boilerline 1 + 2
Zeichnung ist für Kesselreihe 1 + 2 gültig
Kesselreihe 1 + 2